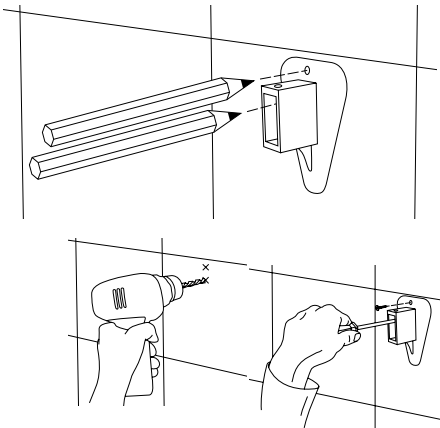
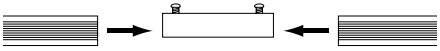


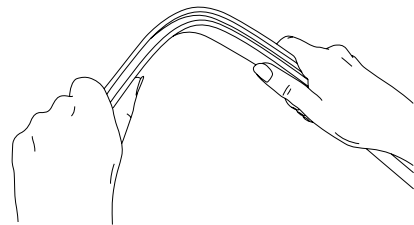
Bendi Track



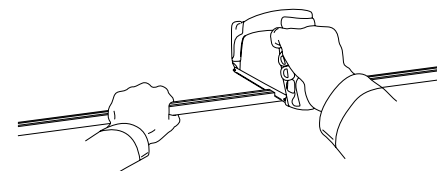
1. Mark, drill, plug and screw the wall brackets in the required position.



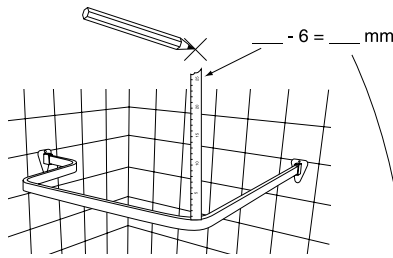
2. Assemble the track lengths using the joining pieces.



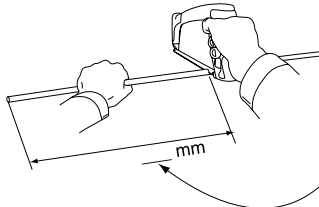
3. Bend the track into the desired shape.



4. Saw the track to the desired length.



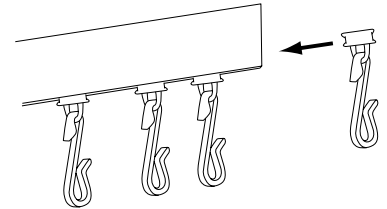
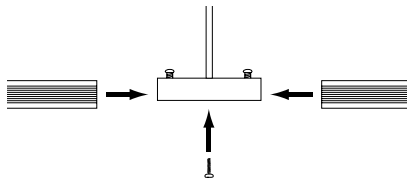
5. Cut the ceiling support to size.



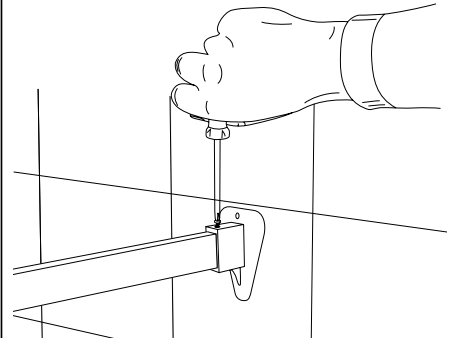
6. Mark, drill and plug the ceiling.



7. Assemble the tracks and ceiling support.



8. Don't forget the gliders.



9. Lock the grub screws when the track is fully assembled in position.

