



**Fitting type:** countertop

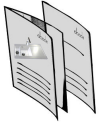
**Sink handing:** Not handed

**Finish style:** Pebble

- **Min. base unit (mm):** n/a
- **Packaged size L x W x D:** 450 x 400 x 155mm
- **Supplied boxed or sleeved:** Boxed
- **Boxed weight:** 5.08 kg
- **Sink only weight:** 4.36 kg

- Remastone composite with a matt composite surface
- Matt surface
- Counter top or shelf

### Included parts:



1 x ABX1004 (m)  
Fitting & care instructions & data sheet - cava basins

### Recommended accessories:



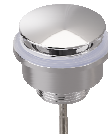
1 x ABX1140  
CAVA Round Basin Plinth Chrome



1 x ABX1141  
CAVA Round Basin Plinth Matt black



1 x ABX1142  
CAVA Round Basin Plinth Brushed brass



1 x ABX1010  
Basin Clicker Waste Universal Chrome



1 x ABX1011  
Basin Clicker Waste Universal Matt Black



1 x ABX1012  
Basin Clicker Waste Universal Brushed Brass



1 x ABX1020  
Basin Bottle Trap Chrome



1 x ABX1021  
Basin Bottle Trap Matt Black



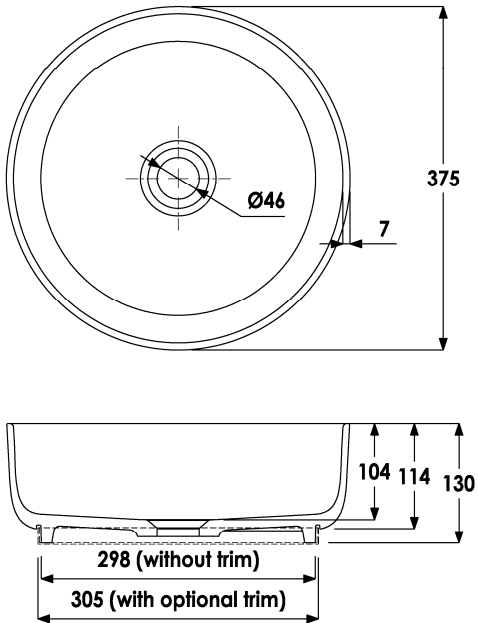
1 x ABX1022  
Basin Bottle Trap Brushed Brass

All accessories can be purchased directly from [www.abode-shop.co.uk](http://www.abode-shop.co.uk) or phone 01226 283434

<p><b>Materials &amp; workmanship warranty summary:</b></p> <ul style="list-style-type: none"> <li>• Sink materials &amp; workmanship 10 years.</li> <li>• Waste kits 1 year.</li> <li>• Connecting pipework 1 year.</li> </ul>	<p><b>Care instructions summary:</b></p> <ul style="list-style-type: none"> <li>• Clean the products regularly using soapy water and a non-abrasive cloth, regular cleaning will prevent the build-up of lime scale and dirt.</li> <li>• Avoid contact with corrosive or abrasive substances.</li> <li>• After cleaning rinse thoroughly with clean water then dry.</li> <li>• For more detail see supplied booklet or <a href="http://www.abodedesigns.co.uk">www.abodedesigns.co.uk</a></li> </ul>
---	--

<p><b>Bowl details:</b></p>	
<p><b>Bowl 1</b> (typically main bowl):  <b>Size W x L x D (mm):</b> 359 x 359 x 104  <b>Construction:</b> Moulded, 7.00mm  <b>Floor radius (mm):</b> 30  <b>Wastehole diameter (mm):</b> 45  <b>Overflow:</b> none (use freeflow waste)  <b>Texture:</b> Matt Gelcoat  <b>Apx. volume (litres):</b> 10.00</p>	<p><b>Bowl 2</b> (typically ½ or ¾ or 2<sup>nd</sup> main bowl):  <b>Size W x L x D (mm):</b> n/a x n/a x n/a  <b>Construction:</b> n/a, n/amm  <b>Floor radius (mm):</b> n/a  <b>Wastehole diameter (mm):</b> n/a  <b>Overflow:</b> n/a  <b>Texture:</b> n/a  <b>Volume (litres):</b> n/a</p>

**Product dimensions and installation information:**  
All details are provided in good faith but do not include the tolerances of the material or manufacturing process.



The technical drawing consists of two views of a sink bowl. The top view shows a circular bowl with an outer diameter of 375 mm and a central wastehole diameter of Ø46 mm. A dimension of 7 mm is shown from the outer edge to the start of the bowl's depth. The side view shows the bowl's profile with a depth of 104 mm, a height of 114 mm, and a total height of 130 mm. The width at the base is 298 mm (without trim) and 305 mm (with optional trim).

**Additional notes:**

**Overall product size:** 375 x new 2023 - wickes x new 2023 - wickes corner radius new 2023 - wickesmm

**Tap(s) detail:** None

**Wastehole(s) detail (mm):** 45, n/a, n/a, (nb. 90mm wastes accept a waste disposal unit)

**Min. base unit (refers to space required for bowl, tap and pipework only):** fits n/a mm carcass

**Min. Recessed fitting width:** required (bowl(s), tap and overflow: n/a mm

**Worktop cut out size:** n/a x n/a corner radius n/a mm

**Min. & Max worktop depth or clip depth reach range:** n/a - n/a mm

**Fitting temple supplied?** No, use cut out instructions as supplied, 65mm dia. Hole required through countertop for waste